

Creating a Macrium Reflect Boot Disk

by Dick Evans

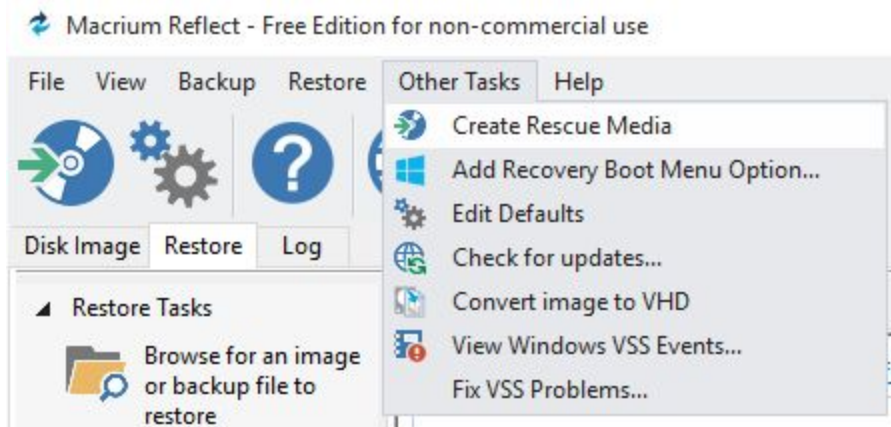
You followed the white paper on making an image backup using Macrium Reflect and have a good image of your complete hard drive just in case the hard drive fails or perhaps a virus or some serious malware invaded your PC and you need to get back to a safe place.

Your hard drive is messed up or even beyond repair physically. You cannot boot from it. So you grab your image which was stored on a portable hard drive. There is nothing you can do with that image unless you can get the Macrium Reflect program to work. And to do that you need a special boot disk made from their software. This white paper details how to do that.

By the way, if you did not make that boot disk, find a friend that can download and install Macrium Reflect on their PC and make one for you. Let's get started.



Open Reflect



Click **Other Tasks** >

Rescue Media Wizard

Create bootable rescue media



The rescue media is required to recover your system if it will not boot.

The Windows PE rescue environment is a self-contained version of Windows containing the Macrium Reflect application.

It will enable you to:

- Restore your system from a backup
- Fix booting issues
- Enable a system to boot on new hardware, using ReDeploy

The other features of Reflect, such as making backups or exploring backup images, are also available in the Rescue Environment.

You should always test that your rescue media will boot, to be sure the media is not corrupt and your system is compatible with the chosen version of Windows PE.

This wizard will create Windows PE 10.0 rescue media. Supports UEFI / secure boot, USB 3.0, HyperV Gen 2 VMs and Windows overlay filesystems. It is the best choice for Windows 10 systems. It is required for Win 8.1 WIMBoot and Win 10 compact installs.

Change PE Version

Please press the **Next** button to continue.

Help

< Back

Next >

Cancel

Finish

Click **Next**

Rescue Media Drivers

Add drivers to the Rescue Media for any unsupported devices

All devices have drivers configured for WinPE

Device	Status
✓ Marvell Yukon 88E8040 PCI-E Fast Ethernet Controller	Device support in WinPE
✓ Dell Wireless 1395 WLAN Mini-Card	Driver already present in Drivers folder
✓ Standard SATA AHCI Controller	Compatible device support in WinPE
✓ Intel(R) ICH8 Family USB Universal Host Controller - 2830	Compatible device support in WinPE
✓ Intel(R) ICH8 Family USB Universal Host Controller - 2831	Compatible device support in WinPE
✓ Intel(R) ICH8 Family USB Universal Host Controller - 2832	Compatible device support in WinPE
✓ Intel(R) ICH8 Family USB Universal Host Controller - 2834	Compatible device support in WinPE
✓ Intel(R) ICH8 Family USB Universal Host Controller - 2835	Compatible device support in WinPE
✓ Intel(R) ICH8 Family USB2 Enhanced Host Controller - 2836	Compatible device support in WinPE
✓ Intel(R) ICH8 Family USB2 Enhanced Host Controller - 283A	Compatible device support in WinPE

Update Driver

Please press the **Next** button to continue.

Help

< Back

Next >

Cancel

Finish

Click **Next**

Burn Rescue Media

Choose your optical/USB device and click finish.

Version: 6.1.887
Date: 10/23/2015
Type: Auto-built Windows PE 10.0 (WADK) - 32 Bit

Rebuild the rescue environment by copying the required files **Rebuild**

Check for unsupported devices each time the Rescue media loads.
 Prompt for key press to continue booting from the Rescue media.

CD/DVD burner (D:) - PBDS, DVD+-RW DS-8W1P vBD1B (0:0:0) v
 USB Device

Enable multiboot MBR/UEFI USB support

Please press the **Finish** button to continue.

Help < Back Next > Cancel **Finish**

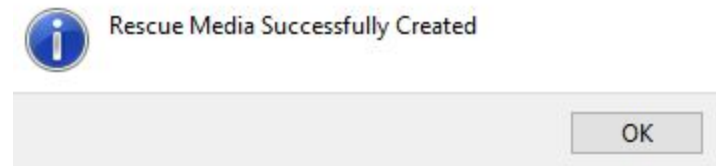
Insert a new CD-R in your CD/DVD tray and press **Finish**

(You can also use an empty USB flash drive instead of a CD. Choose that option instead of the CD option to do so.)



Wait a bit for the creation to complete. The CD will eject.

Macrium Reflect



Click **OK** to finish



Then Exit out of Macrium Reflect

Label the CD “Macrium Boot Disk” and store it with your portable hard drive.

Would be a good idea to try and boot your computer with the new boot disk to be sure it works!